

HTA

High Temperature
Ascending Threshold
Indicators



american
thermal
instruments



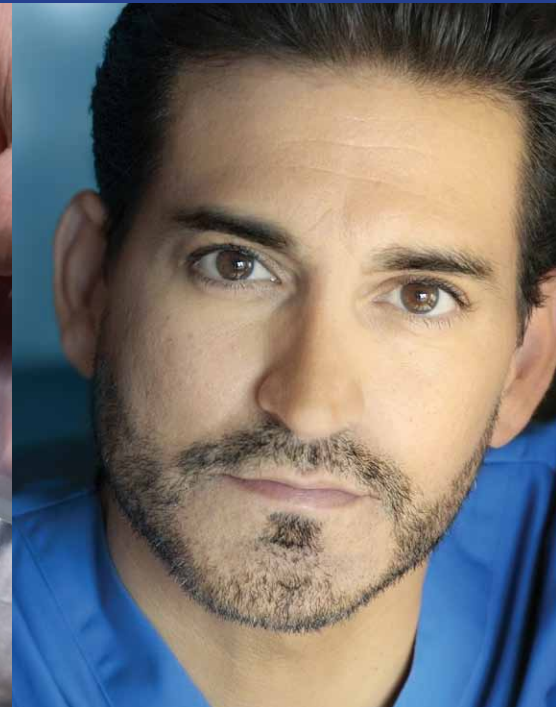
ATI's affordable, customized High Temperature Ascending (HTA) indicators clearly reveal if medical devices and biologics have been exposed to damaging high temperatures.

High temperatures have the potential to compromise medical devices and biologics. ATI's HTA indicators help you easily minimize the risks of endangering people, as well as your company's financial stability.

The efficient, economical design of ATI's HTA indicators simplifies implementation, allowing you to reduce risk with confidence.

Featuring an irreversible color change from white to red, the indicators easily communicate high temperature excursions to anyone in the supply chain.

Customization also sets ATI solutions apart . . . including response temperatures from 26°C to 215°C and our patent pending HTA/2D barcode labels.





You can easily monitor high temperatures with the compact, self-adhesive design of ATI's HTA indicators.



Not-Activated
White circle shows if response temperature is not exceeded.



Triggered
White circle irreversibly changes to red if temperature exceeds the limit.

Minimize risks from the dock to the doctor when you see red.

Your ideal customized solution. Medical devices and biologics have varying temperature requirements. With ATI HTA indicators, you can expect precise temperature monitoring. Response temperatures range from 26°C to 215°C. Accuracy tolerances are as low as +/- 1°C. In every way, ATI designs HTA indicators to meet your specific needs.

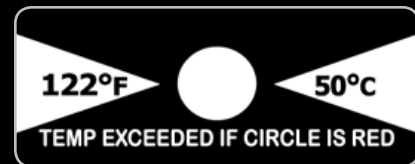
Innovation focused on you.

ATI continually incorporates advanced technology into affordable innovative solutions. A prime example is our patent pending hybrid HTA/2D barcode. You benefit from high temperature indication along with efficient scanning of barcode data on your medical product. It's a customized solution designed to save you time and costs.



Fool-proof monitoring. You don't have to worry about weak links in your supply chain with ATI HTA indicators. Anyone at any point can easily see if the indicator has changed from white to red, which means the temperature has exceeded the specified temperature. And it's an irreversible change, so there's no question if an excursion has occurred.

Easy implementation. ATI simplifies the entire process of monitoring high temperatures. The self-adhesive HTA indicators can be applied by hand, application tools or machinery. Due to their thin, flexible design, you can apply them to individual products or packaging. The indicators also save time and avoid training issues. They're self-activating, easy to read and can be transferred to quality control documents for reporting purposes.



Specifications

Response Temperatures:
77°F/25°C through 170°F/76.7°C
Accuracy: ±1°C or ±2 °C

180°F/82.2°C through 360°F/182.2°C
Accuracy: ±2 °C (tighter accuracy available upon request)

370°F/187.8°C through 420°F/215.6°C
Accuracy: ±3°C (tighter accuracy available upon request)

Packaging:
Roll or sheet form

Indicator Display:
Irreversible color change – white to red

Activation:
Self-activating

Storage:
Varies by model



P 800.648.6339
937.429.2114
F 937.429.3558
2400 East River Road
Dayton, Ohio 45439 USA
www.americanthermal.com

Version 1
2/9/2011