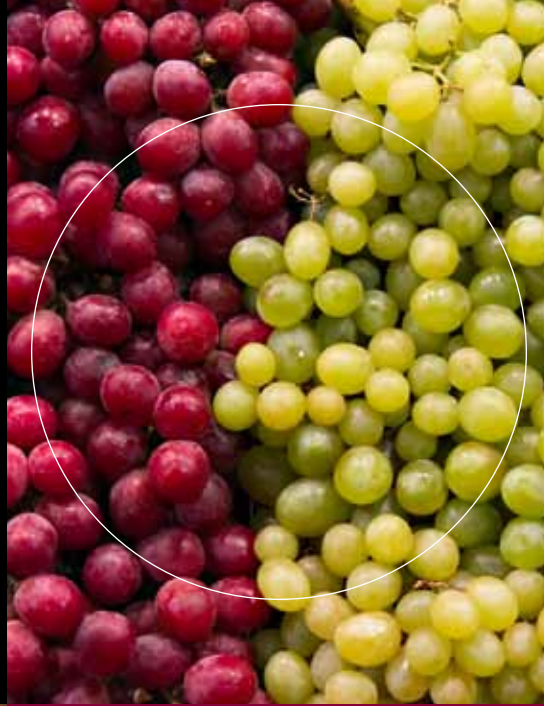


LOG-IC[®]

Wireless Temperature
Monitoring and Protection

Revolutionize
Your Cold Chain[™]



All of the best qualities of a wine can be lost on the road to your market due to temperature extremes. LOG-IC[®] tracks temperatures from point to point, assuring you and the consumer of a perfect product outcome.

Temperatures above 70°F change a wine's chemistry, affecting aroma, taste and appearance. Freezing also causes problems. Wine cellars are temperature-controlled for a reason.

LOG-IC covers the most vulnerable time for wine -- between the winery and the market. Its innovative design overcomes limitations of common temperature monitors. Advantages include time- and cost-savings, simplified

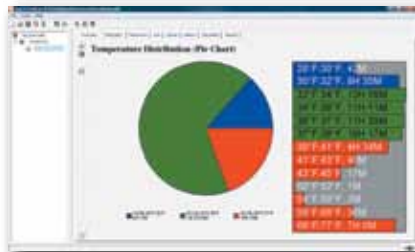
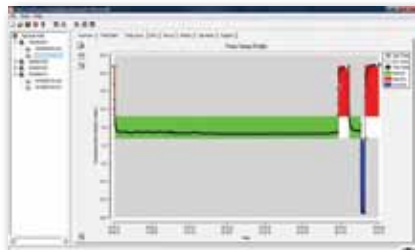
implementation and use, as well as customized reporting and analysis.

With LOG-IC, you can select the exact level of protection you need, from one bottle or case to a full pallet or truckload. LOG-IC's versatility also means you can select the detailed data and analysis that aligns with your particular quality requirements.





The mobile handheld reader lets you scan and view LOG-IC RFID tags without opening boxes, giving you a complete history of both ascending and descending temperatures. It's quick, easy and cost-effective. Desktop readers are also available.



The intuitive integrated software provides at-a-glance graphs, charts and data along with detailed reports, viewable on the reader and PC. Customization features include the ability to configure LOG-IC tags on the PC and set automatic email alerts.

Keep your wine brilliant and balanced with LOG-IC.

Meet the expectations. Few products hold such high expectations as wine. LOG-IC helps you deliver on those expectations by monitoring temperature excursions in transit or storage. Its compact, wireless RFID data tags precisely monitor and log the temperature up to 4,000 times, at the intervals you choose.

Complexity is for wine. LOG-IC focuses on simplicity in monitoring, for a complex wine or otherwise. Ease of use shines through in wireless reading of data tags, visual indicators for temperature excursions, immediate decision support, quick and easy data downloads, automatic report generation and more.

Clarify for a clear advantage. LOG-IC lets you filter out common temperature monitor imperfections. Due to compact, durable, waterproof LOG-IC tags, you avoid the risks of bulky, fragile, sensitive electronics. Cost is another key advantage. Efficient packaging and design contributes to a low cost per use with reusable LOG-IC tags.

A full-bodied solution. You can effectively meet your staff, budget and quality requirements with the versatile LOG-IC solution. View tag data anywhere on mobile readers or download to a PC. Streamline the solution with auto reply postcard monitors. Get the precise time/temperature data you need.

Cultivate quality. You work to create the perfect conditions for wine. Why not grow that awareness all the way to the consumer? With LOG-IC, you raise awareness and accountability for how temperature affects wine quality.



Specifications

Measurement Range: -40°C to +85°C
(-40°F to 185°F)

Accuracy: ±0.5°C (Tighter accuracy available)

Memory Type: Up to 64K bit

Battery Life: Up to 3 years in recording mode

Size (cm): 5.8(L) x 5.8(W) x 0.2(H)

Weight (grams): 5.7 grams

Programming:

Standard

Customer-configurable

Customized

Reusability: Yes

Options:

Auto reply postcard monitor

USB port on tag

LOG-IC Design Advantages vs. Common Sensors

More than 13x smaller

More than 9x lighter

Over 2x more data points

Over 100x faster data retrieval



american
thermal
instruments

P 800.648.6339
937.429.2114
F 937.429.3558
2400 East River Road
Dayton, Ohio 45439 USA
www.americanthermal.com