

LOG-IC[®]

Wireless Temperature
Monitoring and Protection

Revolutionize
Your Cold Chain[™]



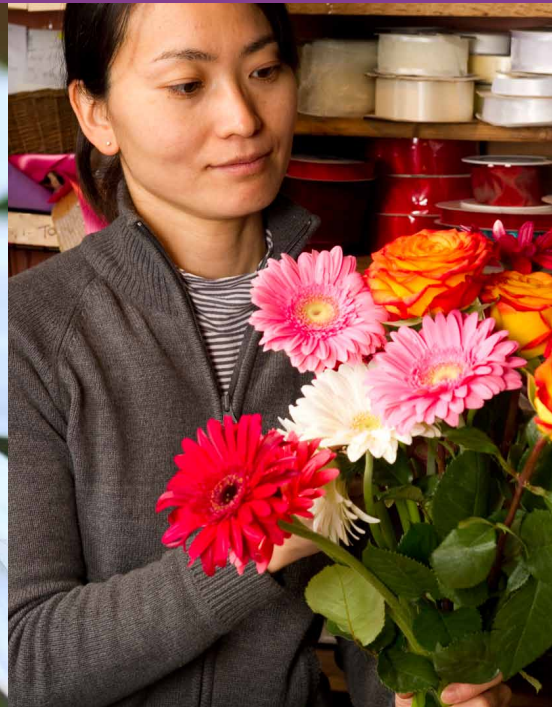
If flowers have poor shelf life and look less than fresh, the culprit may be warm temperatures in the cold chain. LOG-IC[®] helps you monitor extreme temperatures, lower costs and improve floral quality.

Temperatures above 40°F during transit contribute to quality issues such as dehydration, gray mold and ethylene damage. The key to fixing costly quality problems is to know when temperatures rise too high.

Infrared systems have many limitations, while needle probes are invasive and labor-intensive. LOG-IC wireless RFID technology gives you an efficient, fast and cost-effective

solution. Compact tags, featuring a durable, waterproof design, work at the unit, case, pallet or truck level.

With LOG-IC anyone can tell at a glance whether extreme temperatures occurred in transit. In addition, you'll benefit from integrated intuitive software offering complete temperature monitoring with accurate, detailed data.



Take the fresh approach. LOG-IC delivers for floral.

Revolutionize your cold chain.™ To prevent heat-related damage, you need to know when it occurs. LOG-IC makes it clear to anyone in the cold chain. Economical and easy to use, LOG-IC helps you raise awareness and accountability throughout the cold chain.

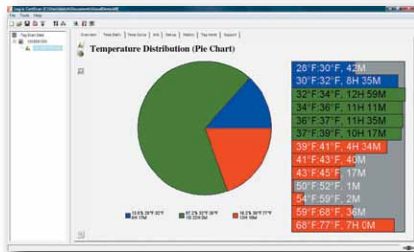
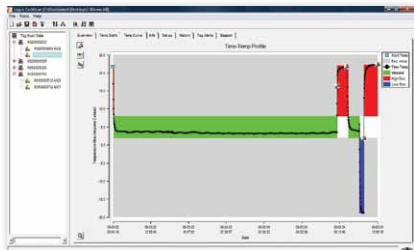
Beat the heat. You can't always see temperature damage when a floral shipment arrives. It shows up later with shortened shelf life. LOG-IC tags reveal potentially damaging temperatures anywhere in the cold chain, even for short time spans. Blinking red lights on the tags indicate high and low temperature excursions that anyone can see. You benefit from immediate decision support for accepting or rejecting floral shipments.

A growth path for quality. Customers consider quality in purchase decisions now more than ever. LOG-IC's intuitive software takes temperature monitoring much further, providing insights and data that save costs, reduce claims and improve quality. You can take immediate action or plan for long-term improvements with accurate, detailed time/temperature data and graphical analysis.

Get fresh facts fast. LOG-IC simplifies temperature monitoring. Wireless technology lets you scan tags for immediate data and decision support. You can view data with charts and graphs from thousands of tags on the handheld scanner or easily download to a PC. Tags can also be embedded in an auto reply postcard to ensure easy return of data from any location.



The mobile handheld reader lets you scan and view LOG-IC RFID tags without opening boxes, giving you a complete history of both ascending and descending temperatures. It's quick, easy and cost-effective. Desktop readers are also available.



The intuitive integrated software provides at-a-glance graphs, charts and data along with detailed reports, viewable on the reader and PC. Customization features include the ability to configure LOG-IC tags on the PC and set automatic email alerts.



Specifications

Measurement Range: -40°C to +85°C
(-40°F to 185°F)

Accuracy: ±0.5°C (Tighter accuracy available)

Memory Type: Up to 64K bit

Battery Life: Up to 3 years in recording mode

Size (cm): 5.8(L) x 5.8(W) x 0.2(H)

Weight (grams): 5.7 grams

Programming:

- Standard
- Customer-configurable
- Customized

Reusability: Yes

Options:

- Auto reply postcard monitor
- USB port on tag
- Stainless steel probe for tag (attached with 33-inch cord)

LOG-IC Design Advantages vs. Common Sensors

More than 13x smaller

More than 9x lighter

Over 2x more data points

Over 100x faster data retrieval



P 800.648.6339
937.429.2114
F 937.429.3558
2400 East River Road
Dayton, Ohio 45439 USA
www.americanthermal.com

Version 1
2/9/2011