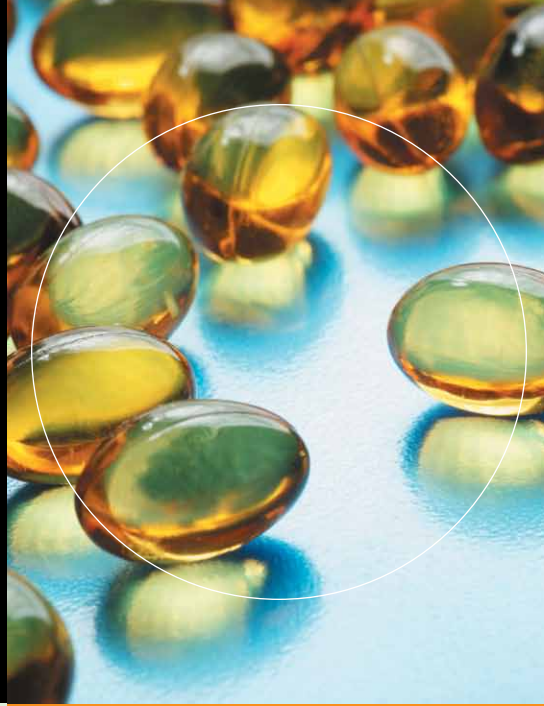
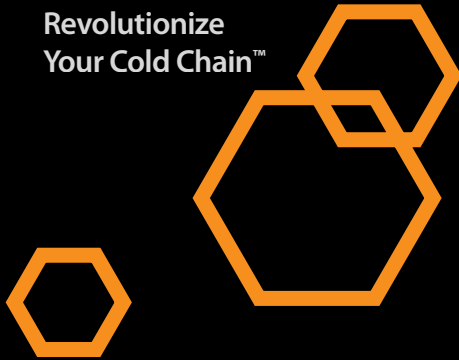


LOG-IC[®]

Wireless Temperature
Monitoring and Protection

Revolutionize
Your Cold Chain[™]



Only LOG-IC[®] gives you complete temperature accountability. Compare other temperature monitoring products. You'll find LOG-IC delivers significant time- and cost-saving advantages while reducing risk.

Featuring wireless RFID technology,

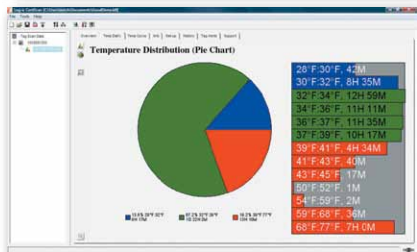
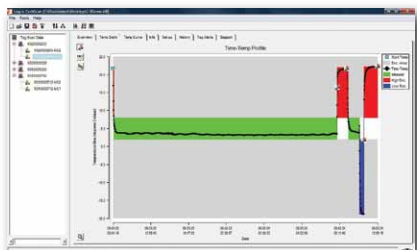
LOG-IC gives you the most complete and cost-effective coverage for temperature monitoring. The durable, compact RFID tags eliminate the risks of fragile electronic sensors and offer an efficient solution at the unit, case, pallet or truck level. Activation is as simple as pushing a button, or you can activate them through a

shipping container using the LOG-IC handheld reader. The reader also allows you to record and view time and temperature data without opening the box. You gain another advantage with the ability to collect and view data from thousands of boxes before downloading to a PC. The integrated intuitive software offers comprehensive decision support.



Pull the plug on inefficient sensors. LOG-IC® lowers your risk.

The mobile handheld reader lets you scan and view LOG-IC RFID tags without opening boxes, giving you a complete history of both ascending and descending temperatures. It's quick, easy and cost-effective. Desktop readers are also available.



The intuitive integrated software provides at-a-glance graphs, charts and data along with detailed reports, viewable on the reader and PC. Customization features include the ability to configure LOG-IC tags on the PC and set automatic email alerts.

Revolutionize your cold chain™. Whether your concern is time, cost, reduced risk or durability, LOG-IC gives you a superior solution versus common, inefficient sensors.

Save time and costs. Common sensors require you to open a box, search for the sensor, take it to the docking station, plug it in the PC and follow download prompts. It's a very time-consuming, labor-intensive process. With LOG-IC wireless technology, you eliminate these steps. Simply scan – without opening a box – and view thousands of tags from the mobile reader, including detailed charts and graphs.

Easily reduce risk. With LOG-IC you can view/download data at any point in your cold chain, as often as you need. Common sensors only download once. Automatic PC email alerts, also available with LOG-IC, give you a faster response to risk. LOG-IC further ensures accurate monitoring with lifetime calibration.

Durability matters. Common sensors put you at risk with sensitive electronics and a fragile design. If you drop them, there's a good chance they'll break. Durable LOG-IC tags are tough enough to survive being run over by a forklift. And they're available as waterproof (NEMA 6), not just splashproof, so they survive spills, puddles or downpours.

Don't take a chance. Any comparison shows that LOG-IC reduces your risk, easily and cost-effectively.



Specifications

Temperature Measurement Range: -30°C to +75°C

Temperature Accuracy: ±0.5°C from -30°C to +30°C; ±1°C from +30°C to +75°C (tighter accuracy available.)

Memory Type: Up to 64K bit

Battery Life: Up to 3 years in recording mode

Packaging: Waterproof, food grade packaging available – Nema 6p, IP68 certified

Size (cm): 5.8(L) x 5.8(W) x 0.2(H)

Weight (grams): 5.7 grams

Programming:

Standard

Customer-configurable

Customized

Reusability: Yes

LOG-IC Design Advantages vs. Common Sensors

More than 13x smaller

More than 9x lighter

Over 2x more data points

Over 100x faster data retrieval



P 800.648.6339

937.429.2114

F 937.429.3558

2400 East River Road

Dayton, Ohio 45439 USA

Version 1.2

REVISED 2/9/2011

www.americanthermal.com